

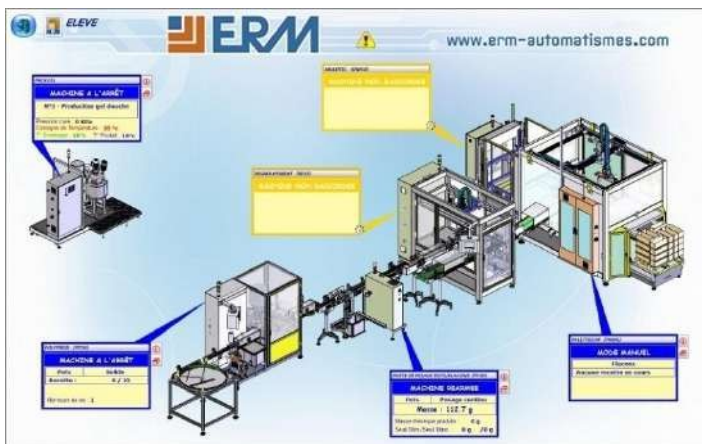


Supervision Ermaflex

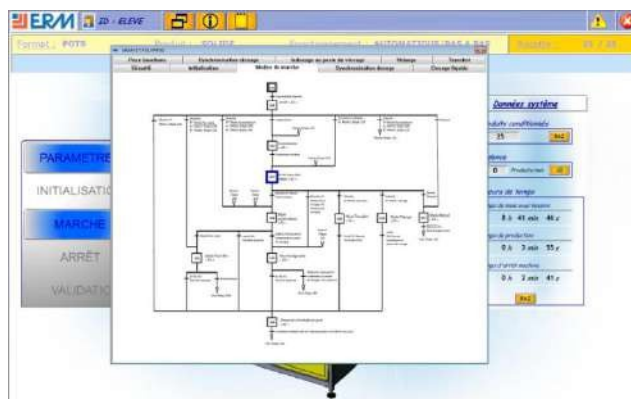
Supervisory control of all or part of the line

Bac PRO PLP - MSPC
BTS MS - IUT
Universities - Engineering

Examples supervision screens



Overview by machine



Task synchronization flowchart

Highlights & Key Activities

- ✓ Control and operation from a control screen, monitoring on animated synoptic, historical data and alarm monitoring
- ✓ Preventive maintenance management
- ✓ Dynamic visualization of a grafcet by machine
- ✓ Recording of events occurring during production

Individual components

- ✓ PC PENTIUM 32 MB server station with ETHERNET card
- ✓ PCVUE 32 software (development key with 1000 variables)
- ✓ Mains connection accessories

References

- ✓ UC20: Supervision with one PC server and one PC Vue 32 license open to multi-user licenses
- ✓ IP10: IP Camera & Industrial Supervision (PoE-based)
- ✓ UC13: Supervision Mini: supervisory control including: PC Vue 32 Educ Mini Développement+Runtime software (250 variables) For a single machine

Option: Siemens Wincc Flexible version, consult us

Features

- ✓ Electrical power: 230V single-phase

This system is accompanied a technical and educational dossier.

Functional architecture

Functional description

- ✓ The supervision station is connected to the various modules of the Ermaflex line via an Ethernet network.
- ✓ It receives information and transmits commands to the PLCs via the networks used in the installation.

Pedagogical approach

Educational activities

- ✓ Control and drive all or part of the line from a control screen
- ✓ Diagnosis
- ✓ Manage preventive maintenance, alarm history and archiving
- ✓ Grafcet study with active dynamic steps
- ✓ Record the various events that occur during production
- ✓ Maintain a log of production rates and running times
- ✓ View the entire line on-screen with a global synoptic or each part of the line with a detailed animated synoptic of the selected module.
- ✓ Study the student's reactivity to a problem (introduction of defects)

Examples of practical work

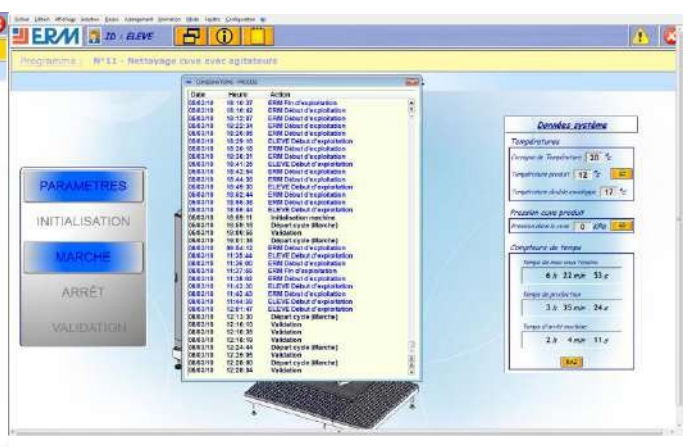
- TP integration a new asset: Commissioning of supervision and verification of its operation.
- ✓ Analysis of Ethernet network and addressing / justification of addresses and masks
- ✓ Check supervisory PC address
- ✓ Checking the presence of various devices on the network (pinging)
- ✓ Commissioning the supervisor and checking that it works properly
- ✓ Troubleshooting on the network (failure simulation on connectors)
- TP preventive maintenance: program an indicator to trigger preventive maintenance and program feedback to the supervisor.
- ✓ Choice indicator (counting, hourly, etc.)
- ✓ a variable stored in the supervisor and PLC, propose and validate a modification to the PLC program.
- ✓ Programming the PLC and checking indicator operation
- ✓ from a variable (stored in the supervisor and PLC) and a procedure: displaying the indicator in the relevant machine window



Exemples supervision screens



Alarm management



Consigne list



Operator console setup



Maintenance



Trend line